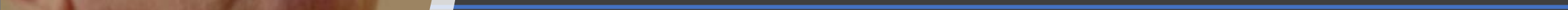


Cinematic Health Education, Inc



E³ : Empathy, Emotion and Engagement



Cinematic Health Education

- Founded in 2018 to meet the growing need for allied health professionals
- Bringing a unique approach to learning to help combat:
 - The growing labor shortage for allied health positions
 - The extreme levels of structural employee attrition
 - Challenges unique to the demographics of our target population
 - Income
 - Language
 - Culture
- Created ReadyCNA to better prepare CNA students for the realities of the role utilizing a unique approach to teaching



Cinematic Health
EDUCATION



PA TNA Requirements*

- Take 8 hour Temporary Nurse Aide training which must include:
 - Prevention of resident abuse and reporting of abuse
 - 50 question test
- 80 hours of on the job training
- Employer (in conjunction with the TNA) submits the attestation form
 - Must happen within 4 months of the end of the emergency
- TNA schedules Pearson Vue exam
 - Must successfully pass within 24 months of becoming eligible to test

**PA Department of Education*



Preparing a TNA to Test to Become a CNA

- Pearson Vue has two parts:
 - Written exam
 - Skills test
- TNA Bridge Course
 - Designed for adult learners
 - Story-based approach
 - Online - asynchronous
 - 30 hours
- Skills Training
 - Provided by facility
 - Follow step by step guide provided by PA Dept. of Education





Chad Schaedler, CRO

chad@cinematichealtheducation.com
