

LTC COVID-19 Vaccination Clinics:

Comparing Moderna and Pfizer Vaccines



We will be starting shortly...

We will be starting the office hours shortly. In the meantime, please submit your questions for our experts via chat.



Today's Presenters



David Gifford

Chief Medical
Officer



**Courtney
Bishnoi**

VP of Quality and
Programs



COVID-19 Vaccine Distribution and Prioritization



State Variation Exists in LTC Vaccination Program

- States choose the following:
 - Moderna or Pfizer vaccine
 - Activate the LTC Pharmacy Partnership to include:
 - SNFs only
 - **all** LTC facilities eligible for the program (if enough vaccine is available)
 - Delay activation of the program
- Some states or counties are choosing to do something different all together (e.g. West Virginia and LA County, CA)



Experience to date

- High uptake among residents
- Wide variation in staff uptake
 - Staff hesitancy can be addressed with
 - Frequent meetings (e.g. town halls) to answer questions and address concerns
 - Engage medical director to answer questions
 - Provide links to other staff getting the vaccine
 - Discuss value to protecting their family, coworkers and residents
- Use education and promotional material
 - www.ahcancal.org/GetVaccinated





Vaccine Effectiveness and Safety



Moderna vs Pfizer Vaccine

	Pfizer	Moderna
Messenger RNA to spike protein	Yes	Yes
Intramuscular Injection	Yes	Yes
Time between first and second dose	21 days	28 days
Age approved	≥16	≥18
Contra-indication/Warning – anaphylaxis	Yes	Yes
Approved but data insufficient on effectiveness:		
- Pregnant or Breastfeeding	Yes	Yes
- Immunocompromised	Yes	Yes



Vaccine Contents

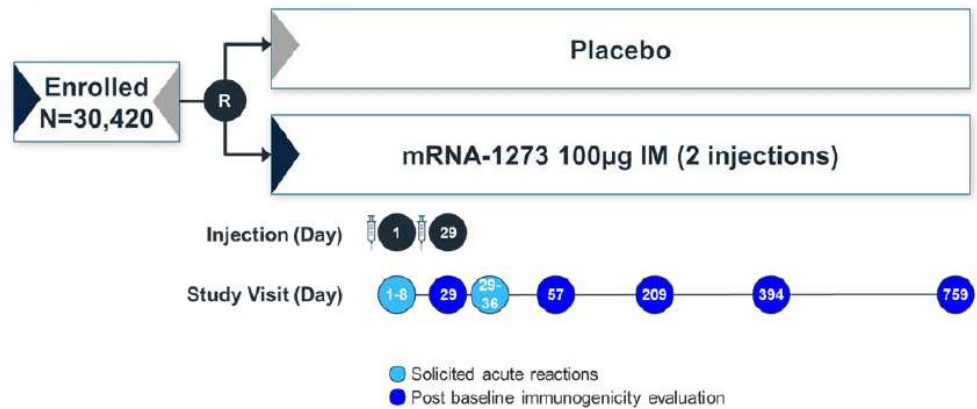
No Eggs & No preservatives

	Pfizer	Moderna
Messenger RNA	Spike Protein for COVID	Spike Protein for COVID
Lipids	((4-hydroxybutyl)azanediyl)bis(hexane-6,1-diyl)bis(2-hexyldecanoate)	
	2-[(polyethylene glycol)-2000]-N,N-ditetradecylacetamide	(SM-102, 1,2-dimyristoyl-rac-glycero-3-methoxypolyethylene glycol-2000 [PEG2000-DMG])
	1,2-distearoyl-sn-glycero-3-phosphocholine [DSPC]	1,2-distearoyl-sn-glycero-3-phosphocholine [DSPC]
	Cholesterol	Cholesterol
Buffer solutions	potassium chloride	tromethamine
	monobasic potassium phosphate	tromethamine hydrochloride
	sodium chloride	acetic acid
	dibasic sodium phosphate dihydrate	sodium acetate
Sugar	Sucrose	Sucrose
Water	Water	Water



Moderna Study Design

Figure 5: Study 301 Design





Moderna Trial Overview

Safety Analysis Population Study Disposition, mRNA-1273-P301

Disposition	Vaccine (N=15,208)	Placebo (N=15,210)	Total (N=30,418)
Randomized			
Completed 1 dose	15,180 (99.8%)	15,170 (99.7%)	30,350 (99.8%)
Completed 2 doses	13,982 (91.9%)	13,916 (91.5%)	27,898 (91.7%)
Exposed (Safety Set)	15,184	15,166	30,350
Discontinued from Study	120 (0.8%)	168 (1.1%)	288 (.09%)



Efficacy of Vaccine to Prevent Symptomatic COVID-19

Pfizer

Moderna

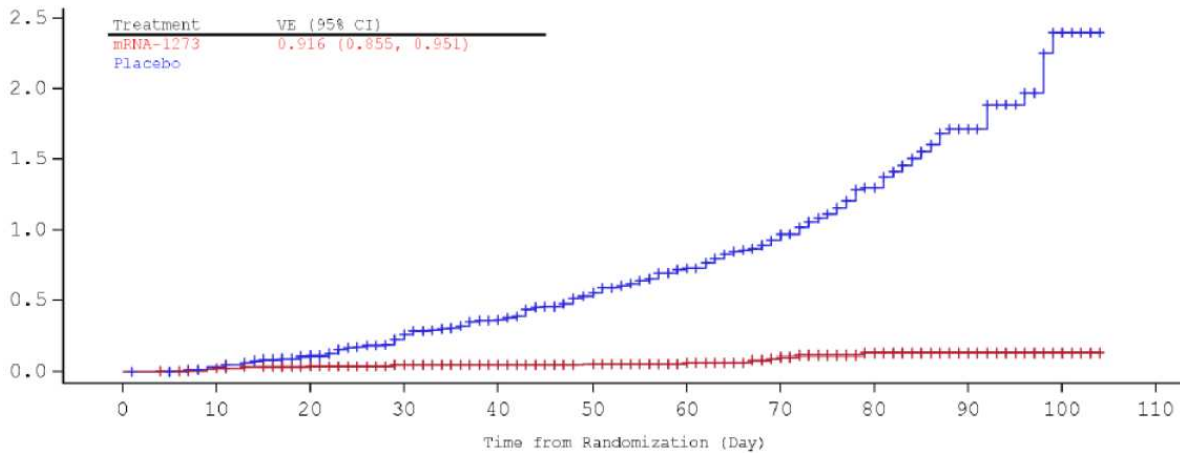
	Vaccine (N=19,965)	Placebo (N= 20,172)	Efficacy
All participants	9	169	94.6%
16 to 55 years	6	120	95.0%
>55 years	3	49	93.8%

	Vaccine (N= 13,934)	Placebo (N= 13,883)	Efficacy
All participants	11	185	94.1%
18 to 65 years	7	156	95.6%
>65 years	4	33	86.4%





Days to Effectiveness Moderna



Summary of Reactions and Adverse Events: Moderna

	Dose 1		Dose 2	
	Vaccine	Placebo	Vaccine	Placebo
Site reaction ¹	86%	21%	91%	21%
Any Systemic Symptoms ²	57%	44%	82%	38%

¹ Pain, swelling, redness

² Fever, headache, fatigue, chills and aches

	Vaccine		Placebo	
	#	%	#	%
Serious Adverse Event	234	1.5%	202	1.3%
Withdrawals due to SAE	41	0.3%	50	0.3%
Death	2	0.1%	3	0.1%





Severity of Site Reactions: Moderna

Age 18-64

	Dose 1			Dose 2	
	Mild to Moderate	Severe		Mild to Moderate	Severe
Pain	83.7%	3.2%		85.5%	4.6%
Redness	2.7%	0.3%		7.0%	2.0%
Swelling	6.2%	0.5%		10.9%	1.7%

Mild to Moderate: no or very little limitation in use of arm and treatable with medication
 Severe: requires medication and may limit use of arm



Moderna Symptom Severity (18-65 yr)

	Dose 1			Dose 2	
	Mild or Moderate	Severe		Mild or Moderate	Severe
Fever	0.8%	0.1%		15.8%	1.6%
Fatigue	37.4%	1.1%		57.0%	10.6%
Headache	33.5%	1.9%		57.8%	5.0%
Chills	9.1%	0.1%		46.8%	1.5%
Muscle Aches	23.1%	0.6%		5.1%	1.0%
Joint Pain	0.0%	0.4%		0.0%	5.8%
Nausea/Vomiting	9.3%	0.1%		21.2%	0.1%

Mild to Moderate: no or very little limitation in activities and treatable with medication
Severe: requires medication and may limit activities if medication ineffective





#GetVaccinated

- Vaccine is effective
- Serious side effects are rare
- Predictable symptoms commonly occur and increase after the second dose
 - Most reactions and symptoms are mild to moderate
- **Great news for residents, their families and staff!!!**



Resources



Local Infection Site Symptoms

Moderna					Pfizer				
% with symptom at injection site					% with symptom at injection site				
	Vaccine Dose #1	Placebo Dose #1	Vaccine Dose #2	Placebo Dose #2		Vaccine Dose #1	Placebo Dose #1	Vaccine Dose #2	Placebo Dose #2
Age 18-64					Age 16-55				
Pain	74.0%	12.8%	83.4%	11.9%	Pain	83.1%	14.0%	77.8%	11.7%
Redness	2.3%	0.5%	7.4%	0.4%	Redness	4.5%	1.1%	5.9%	0.7%
Swelling	4.4%	0.5%	10.8%	0.4%	Swelling	5.8%	0.5%	6.3%	0.2%
Age >65					Age >55				
Pain	86.9%	19.1%	90.1%	18.8%	Pain	71.1%	9.3%	66.1%	7.7%
Redness	3.0%	0.4%	9.0%	0.4%	Redness	4.7%	1.1%	7.2%	0.7%
Swelling	6.7%	0.3%	12.6%	0.3%	Swelling	6.5%	1.2%	7.5%	0.7%



Systemic Symptoms Pfizer vs Moderna

Pfizer					Moderna				
	Dose 1		Dose 2			Dose 1		Dose 2	
	Vaccine	Placebo	Vaccine	Placebo		Vaccine	Placebo	Vaccine	Placebo
Age 18 to 55					Age 18 to 64				
Fever	3.7%	0.9%	15.8%	0.5%	Fever	0.9%	0.3%	17.4%	0.4%
Fatigue	47.4%	3.4%	59.4%	22.8%	Fatigue	38.5%	28.8%	67.6%	24.5%
Headache	41.9%	33.7%	51.7%	24.1%	Headache	35.4%	29.0%	62.8%	25.4%
Chills	14.0%	6.4%	35.1%	3.8%	Chills	9.2%	6.4%	48.3%	5.9%
Muscle Ac	21.3%	10.8%	37.3%	8.2%	Muscle Ac	23.7%	14.3%	6.1%	12.7%
Joint Pain	11.0%	6.0%	21.9%	5.2%	Joint Pain	0.4%	0.3%	5.8%	0.3%
Vomiting	1.2%	1.2%	1.9%	1.2%	Vomiting	9.4%	8.0%	21.3%	7.3%





AHCA/NCAL Guidance

- Guidance
 - [Pharmacy Partnership Program overview and FAQ](#)
 - [Vaccine Clinic Checklist for Facilities](#)
 - [Tactics for Effectively Communicating with Staff](#)
 - [Pharmacy Partnership for LTC Program: Overview and FAQs](#)
 - [Staffing Considerations Post-Vaccine](#)
 - [Employment Questions](#)
 - [Clinical Questions](#)



Promoting Vaccine Uptake

- [Talking points](#)
- [Communications tactics checklist](#)
- Template letters for consent ([families](#) and [staff](#))
 - Also available in Spanish
- [Social media toolkit](#) (#GetVaccinated)
- [#GetVaccinated & #GotVaccinated graphics](#)
- [Media materials](#)
- And more!

www.ahcancal.org/GetVaccinated





Pharmacy Contacts

- **Walgreens:**
 - If you have not heard from them, contact ImmunizeLTC@walgreens.com

- **CVS:**
 - If you have not heard from them:
 - Check your SPAM
 - Update the facility contact information: <https://www.omnicare.com/covid-19-vaccine-resource>
 - Send email: CovidVaccineClinicsLTCF@CVSHealth.com with “CONTACT” as subject and facility name, address and point of contact info



Pharmacy Contacts

- **MHA:**
 - Contact individual LTC pharmacies
 - General contact is vaccines@mhainc.com

- To verify program enrollment, contact your state public health agency





FDA Vaccine Information

- [Moderna EUA Memo](#)
- [Moderna Fact Sheet](#) (recipients and caregivers)
- [Moderna Fact Sheet](#) (health care providers)

- [Pfizer EUA Memo](#)
- [Pfizer Fact Sheet](#) (recipients and caregivers)
- [Pfizer Fact Sheet](#) (health care providers)

- [COVID-19 Vaccines Page](#)



CDC Resources

- [Pharmacy Partnership Program](#)
- [Post Vaccine Considerations for Healthcare Personnel | CDC](#)
- [Post Vaccine Considerations for Residents | CDC](#)
- [Importance of COVID-19 Vaccination for Residents of Long-term Care Facilities | CDC](#)
- [Interim Clinical Considerations for Use of Pfizer-BioNTech COVID-19 Vaccine | CDC](#)
- [COVID-19 vaccination website for healthcare professionals](#)



AHCA[®]
AMERICAN HEALTH CARE ASSOCIATION

NCAL[®]
NATIONAL CENTER FOR ASSISTED LIVING

IMPROVING LIVES *by*
DELIVERING SOLUTIONS *for*
QUALITY CARE